

5mm SPC FLOORING

WHO WE ARE



EVO SERIES

a next
generation
for flooring

shaping up
our smart life.

EraFlor is the premium in-house brand from L&T Marketing Sdn Bhd, a leading company in the Malaysian flooring industry with three decades of rich experience.

As a company committed to responsible business practices, EraFlor SPC flooring is trusted by homeowners and architects alike and can be found in residential and commercial spaces throughout Peninsular Malaysia.

EraFlor SPC (Stone Polymer Composite) represents a new generation in floor coverings. Engineered with smart materials to create a heavy duty core, EraFlor SPC flooring is suited for high traffic and commercial environments.

EraFlor features embossed and matt textures that realistically mimics wood and stone surfaces. Stay secured with wear resistance and a water resistant SPC core, backed with a lifetime termite resistant warranty.



TABLE OF CONTENTS

WOOD collection



GE 811 Beige Oak



GE 813 Fuji Oak



GE 814 Umber Oak



GE 815 Cinnamon Oak



GE 816 Crème Oak



GE 817 Golden Oak

CONCRETE collection



GC 612 Weather Concrete



GC 614 Moon Rock

Complete Color Matching Accessories Available For:

GE 811 - Beige Oak

GE 813 - Fuji Oak

GE 814 - Umber Oak

GE 815 - Cinnamon Oak

EVO Series



WOOD COLLECTION

SPC RIGID CORE FLOORING

WOOD COLLECTION

Specifications	Product Dimension	1220mm x 180mm x 5mm
	Panel Feature	Natural SPC Core, 4-Sided Micro Bevel
	Surface Texture	Embossed
	Wear Layer	0.5mm
	Product Density	2000 Kg/m ³
Packaging Details	1 Box	10 pcs (2.196 m ² / 23.64 sqft) - 22 Kg / Box
	1 Pallet	50 bxs (109.80 m ² / 1182 sqft) - 1100 Kg / Pallet

GE811 Beige Oak

Note: Colors shown might have slight difference compared to actual products.



SPECIFICATIONS

PANEL FEATURE : 4-Sided Micro Bevel | **THICKNESS :** 5 mm | **SURFACE :** Embossed
WARRANTY : 10 years for domestic application. 5 years for moderate commercial application

DIMENSIONS

1200 (L) x 180 (W) x 5 mm (T) | 1 box = 10 panels (23.64 sqft)

MATCHING ACCESSORIES

Stairboard



Beige

Stairboard Nosing



Beige

End



Beige

Adaptation



Beige

Transition



Beige



Note: Colors shown might have slight difference compared to actual products.



SPECIFICATIONS

PANEL FEATURE : 4-Sided Micro Bevel | **THICKNESS :** 5 mm | **SURFACE :** Embossed
WARRANTY : 10 years for domestic application. 5 years for moderate commercial application

DIMENSIONS

1200 (L) x 180 (W) x 5 mm (T) | 1 box = 10 panels (23.64 sqft)

MATCHING ACCESSORIES

- Stairboard**

Fuji
- Stairboard Nosing**

Fuji
- End**

Fuji
- Adaptation**

Fuji
- Transition**

Fuji

GE814 Umber Oak

Note: Colors shown might have slight difference compared to actual products.



SPECIFICATIONS

PANEL FEATURE : 4-Sided Micro Bevel | **THICKNESS :** 5 mm | **SURFACE :** Embossed
WARRANTY : 10 years for domestic application. 5 years for moderate commercial application

DIMENSIONS

1200 (L) x 180 (W) x 5 mm (T) | 1 box = 10 panels (23.64 sqft)

MATCHING ACCESSORIES

Stairboard



Burnt Umber

Stairboard Nosing



Burnt Umber

End



Burnt Umber

Adaptation



Burnt Umber

Transition



Burnt Umber

GE815

Cinnamon Oak

Note: Colors shown might have slight difference compared to actual products.



SPECIFICATIONS

PANEL FEATURE : 4-Sided Micro Bevel | **THICKNESS :** 5 mm | **SURFACE :** Embossed
WARRANTY : 10 years for domestic application. 5 years for moderate commercial application

DIMENSIONS

1200 (L) x 180 (W) x 5 mm (T) | 1 box = 10 panels (23.64 sqft)

MATCHING ACCESSORIES

Stairboard



Cinnamon

Stairboard Nosing



Cinnamon

End



Cinnamon

Adaptation



Cinnamon

Transition



Cinnamon



Note: Colors shown might have slight difference compared to actual products.

GE816

Crème Oak



SPECIFICATIONS

PANEL FEATURE : 4-Sided Micro Bevel | **THICKNESS :** 5 mm | **SURFACE :** Embossed
WARRANTY : 10 years for domestic application. 5 years for moderate commercial application

DIMENSIONS

1200 (L) x 180 (W) x 5 mm (T) | 1 box = 10 panels (23.64 sqft)

MATCHING & RECOMMENDED ACCESSORIES

End



Beige

Adaptation



Beige

Transition



Beige

GE817 Golden Oak

Note: Colors shown might have slight difference compared to actual products.



SPECIFICATIONS

PANEL FEATURE : 4-Sided Micro Bevel | **THICKNESS :** 5 mm | **SURFACE :** Embossed
WARRANTY : 10 years for domestic application. 5 years for moderate commercial application

DIMENSIONS

1200mm (L) x 180mm (W) x 5 mm (T) | 1 box = 10 panels (23.64 sqft)

MATCHING ACCESSORIES

End



Golden

Adaptation



Golden

Transition



Golden

EVO Series



CONCRETE COLLECTION

SPC RIGID CORE FLOORING

CONCRETE COLLECTION

Specifications

<i>Product Dimension</i>	610 mm x 305 mm x 5 mm
<i>Panel Feature</i>	Natural SPC Core, 4-Sided Micro Bevel
<i>Surface Texture</i>	Matt
<i>Wear Layer</i>	0.5 mm
<i>Product Density</i>	2000 Kg / m ³

Packaging Details

<i>1 Box</i>	10 pcs (1.861 m ² / 20.00 sqft) - 19 Kg / Box
<i>1 Pallet</i>	60 bxs (111.66 m ² / 1200 sqft) - 1140 Kg / Pallet

GC612

Weather Concrete

Note: Colors shown might have slight difference compared to actual products.



SPECIFICATIONS

PANEL FEATURE : 4-Sided Micro Bevel | **THICKNESS :** 5 mm | **SURFACE :** Embossed
WARRANTY : 10 years for domestic application. 5 years for moderate commercial application

DIMENSIONS

610 (W) x 305 (L) x 5 mm (T) | 1 box = 10 panels (20.00 sqft)



Note: Colors shown might have slight difference compared to actual products.

GC614

Moon Rock



SPECIFICATIONS

PANEL FEATURE : 4-Sided Micro Bevel | **THICKNESS :** 5 mm | **SURFACE :** Embossed
WARRANTY : 10 years for domestic application. 5 years for moderate commercial application

DIMENSIONS

610 (W) x 305 (L) x 5 mm (T) | 1 box = 10 panels (20.00 sqft)

EVO Series



Complete Color Matching Profiles

The premium flooring accessories from EraFlor enhances the beauty and functionality of your SPC flooring, ensuring seamless transitions from floor to staircase for safety and style. As the only SPC flooring brand in Malaysia offering color-matching profiles, EraFlor creates a unified and elegant look throughout your space.

DIMENSIONS

Stairboard 1500 x 316 x 35 mm (LxWxH)

Stairboard Nosing 1500 x 66 x 35 mm (LxWxH) | **End** 2440 x 28 x 10 mm (LxWxH)

Adaptation 2440 x 43 x 10 mm (LxWxH) | **Transition** 2440 x 38 x 7 mm (LxWxH)

ERAFLOR[®] SPC STAIRBOARD

SPECIFICATIONS



Stairboard Nosing Dimensions
1500 (L) x 66 (W) x 35 mm (H)

Stairboard Panel Dimensions
1500 (L) x 316 (W) x 35 mm (H)

Introducing the revolutionary SPC stairboard panel and nosing from EraFlor[®]. The stairboard panel offers a seamless, one piece design for treads up to 1.5 m length.

The EraFlor[®] stairboard panel eliminates the joining of nosing and floor panel, presenting a new solution with no visible joining lines (for wall to wall application).



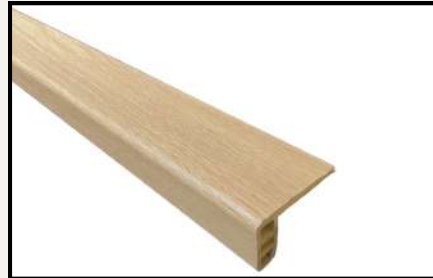


Beige

Stairboard



Stairboard Nosing



Adaptation



Transition



End



Stairboard



Stairboard Nosing



Adaptation



Transition



End



Fuji

Note: Colors shown might have slight difference compared to actual products.



Burnt Umber

Stairboard



Stairboard Nosing



Transition



Adaptation



End



Stairboard



Stairboard Nosing



Transition



Adaptation



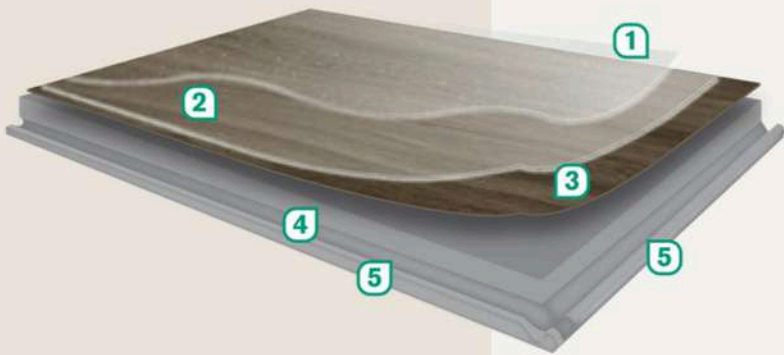
End



Cinnamon

Note: Colors shown might have slight difference compared to actual products.

COMPONENTS



1 UV Coating

Enhanced durability, easy care and maintenance.

2 Clear Wear Layer

Transparent wear layer provides excellent resistance to stain, scuffs and abrasions.

3 Printed Decorative Film

High resolution printed film delivers vivid effects in realistic and natural appearance.

4 SPC Core

100% Termiteproof SPC core, dimensional stable, strong and durable.

5 Locking System

Easy Click Installation System

WHY ERAFLOR ?



Water Resistant Core Materials



Lifetime Termite Warranty



Eco Friendly with 0% Formaldehyde Emission



Flame Retardant



Wear Resistant



Stain Resistant



Easy to Install

WARRANTY

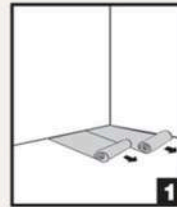
- **Lifetime** Termite Resistant Warranty
- **Up to 5 years*** for moderate commercial application
- **Up to 10 years*** for residential application

*(Subject to stipulated terms & conditions.)

The subfloor surface must be clean from any debris, dry, smoothly screeded and must be even. Any uneven subfloor must undergo with the self - levelling process.

For more information such as subfloor preparation, site condition requirements, installation methods, maintenance requirements, etc., please refer to the EraFlor packaging.

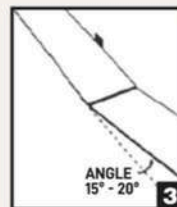
INSTALLATION INSTRUCTIONS



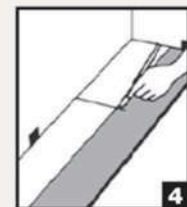
Prepare Floor. Underlay on the dry and leveled subfloor.



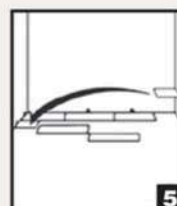
Start at a corner. Place first plank with tongue side facing wall. Use spacers to maintain an expansion space of 8mm between wall and flooring



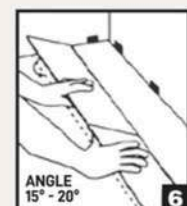
Insert 2nd plank's end tongue to 1st plank's end groove at an angle of 15° to 20°. The plank will click into place when lowered. Line up edges carefully. Planks should be flat to the floor.



For the last plank of a row, flip a full plank to its under side and place beside the row. Measure and mark the required length. Use a ruler and utility knife to score the plank and snap off. Insert as previous diagram.



Begin next row with the last cut off piece from the previous row to stagger the pattern.



To start second row, assemble your entire row on the subfloor before attaching it to the first row. To attach, tilt and push the side tongue into the side groove of the first row at an angle of 15° to 20°. Lower and click into place lining the edges up carefully. Continue laying remaining planks in this manner.



To fit the final row, lay a plank upside down on the flooring as per diagram with the tongue side close to wall. Take another plank and place it right on top of the previous row and use it as a ruler. Don't forget to allow room for spacers. Cut the plank and attach into position.



The gap between the bottom of a door and the vinyl flooring should be 1 cm height. To trim door frames, turn a plank upside down. Place it next to the door frame as per diagram. Use a handsaw and cut away the necessary height so that the planks can slide easily underneath the frame.

